

Cardiff & Vale – Regional Partnership Board

Development of the Starting Well Partnership

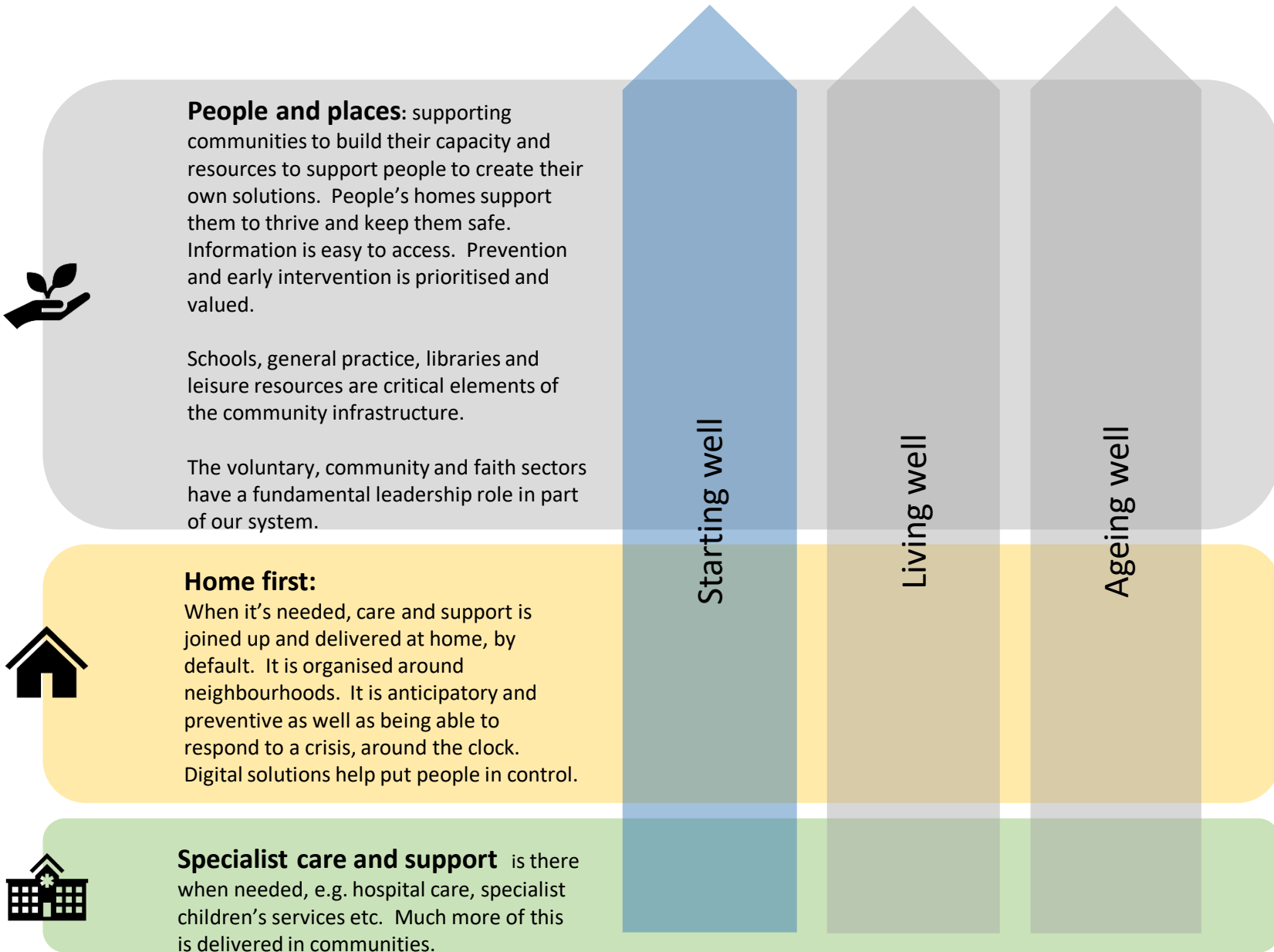
Cath Doman

Director of Health and Social Care Integration

18th May 2021

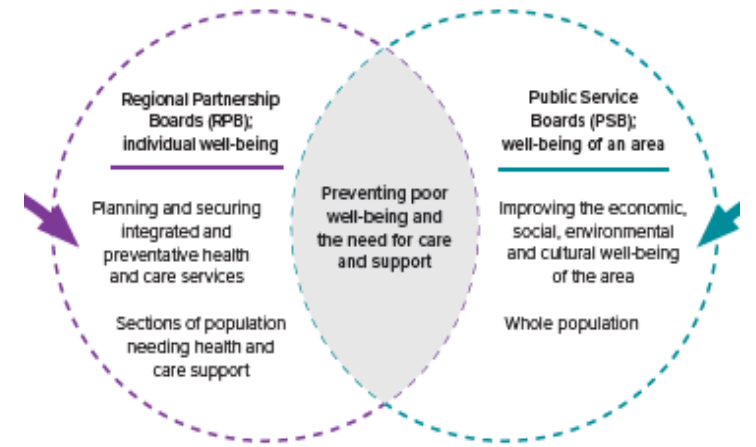


Integrated Care – focused on people and places and the health and wellbeing of the population

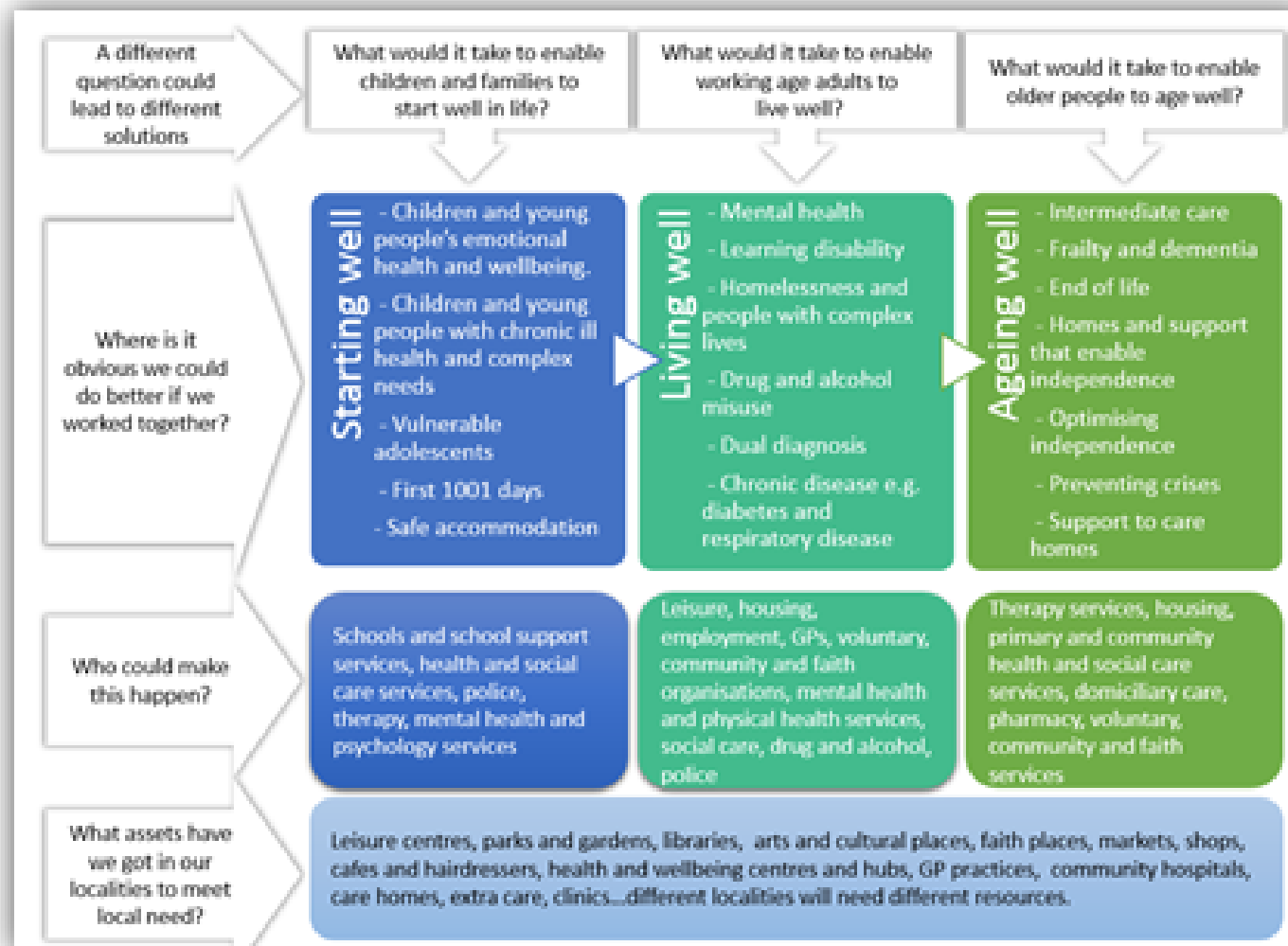


This is a shared agenda across the RPB and PSBs:

PSB priorities of economic, social, environmental and cultural well-being create the conditions for RPB partners to support people with additional health and wellbeing needs.



If we ask the question, *'what would it take to enable children and families to have a better start in life?'* it leads us to different solutions. It helps us move away from what we can do separately as organisations, based on what we have always done, to a shared endeavour, recognising that no single organisation holds the answer, but together we do, especially with closer involvement of the users of our services.



Governance 1

Strategic direction as a partnership and interpretation of national policy. The Board accomplishes its work through the structures below.

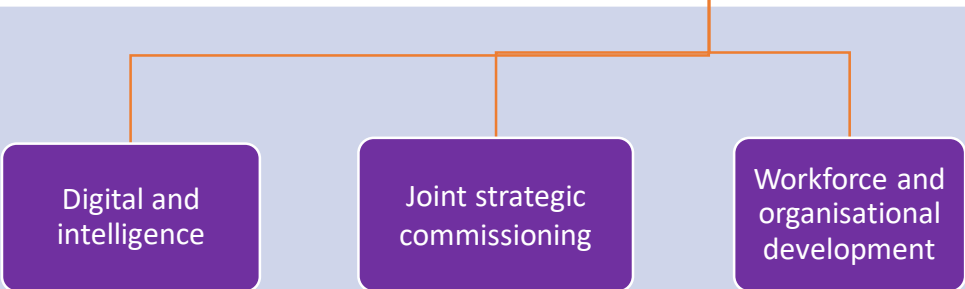


Purpose

- To **accelerate delivery** of the RPB's ambitions for *A Healthier Wales*
- To make a **step-change in the scale of our ambitions** as a partnership
- To **improve health and wellbeing outcomes** for local people
- To **drive integration** of services to improve quality, experience and value
- To **challenge the status quo** where it isn't currently achieving the best for citizens of Cardiff and the Vale of Glamorgan

Delegated powers and responsibility:

- To develop and recommend priorities for action to the RPB
- To deliver the programme of work on behalf of the RPB
- Accountability for programme spend within agreed budgets
- Accountable for delivery of agreed partnership benefits and outcomes



Integrated Care – a step-change in ambition

This programme will bring projects already delivered by the Regional Partnership Board together into **3 programmes of work**, underpinned by a **single programme delivery approach**.

Original Transformation Fund and ICF feeder projects plus wider context e.g. housing, community services

P1 & P2
Wellbeing matters and social prescribing

P3: GP triage

P4 & P5:
Get Me Home

ICF project feeders to be defined

Wider services and initiatives beyond H&SC focus

P6 Developing an ACE Aware Approach to Resilient Children and Young People

ICF project feeders to be defined

Wider services and initiatives beyond H&SC focus e.g. education



Looking ahead 21-22

1. Place-based integrated care model

Vale locality model

Cardiff localities model

2. Integrated care model for children and young people's care and support

Emotional wellbeing and mental health

Complex health and disability needs

Single programme approach across the RPB

Starting Well Partnership priorities

Transitional year programme: Integrated care model for children and young people's care and support

Starting Well Partnership focus

Deliver a multi-agency, integrated model of care for children and young people with emotional wellbeing and mental health needs

Deliver a multi-agency and integrated model of care for children and young people with complex health and disability needs

Existing contributory partnership work (Operational delivery group)

Safe accommodation

- Enfys service: therapeutic support to children looked after
- Family group conferencing and reunification: early intervention to support families to stay together and prevent placement breakdown
- Adolescent resource development: wrap around support to reduce the risks of breakdown and edge of care requirements

A healthy schools approach

- Implementation of the draft framework for a Whole School Approach to emotional health and wellbeing

Integrated service delivery

- Transformation Fund Resilience project supporting children in schools
- ICF prevention: enhanced early help, targeted primary MH support and third sector support to parent carers
- Delivery of a single point of access

Integrated services for children with disabilities

- Continuing Care/joint Equipment integrated approach
- Regional integrated early years pathway
- Ty'r Bont: transitional support to adult services in a school setting

Integrated planning for children with ALN

- Transition service development – regional protocol for multi agency planning
- Positive behaviour support with children with disabilities

Choice and flexibility

- 5 year regional commission strategy
- Learning disability and psychology services review to inform workforce development
- Respite feasibility study for overnight respite support for children with complex health needs and disabilities

RPB partners: schools, social care, specialist mental health services, primary care (GPs), third sector agencies, housing

Enablers

- **Enablers**
- Integrated assessment and care planning supported by integrated care records
- Workforce and organisational development
- Digitally-enabled care/support
 - Self-assessment
 - Shared record view
 - Engagement and involvement
 - Information, advice, guidance and resources
- Intelligence and measures (how are we doing?)
 - Quality and performance reporting
 - Capacity and demand modelling
 - Needs analysis
- Joint commissioning
- Front door/access to services arrangements